

WASHINGTON TOWNSHIP SCHOOL DISTRICT

INCLUSION PRESCHOOL PROGRAM



2023-2024 SCHOOL YEAR

Dear Prospective Preschool Families,

The Washington Township School District is pleased to announce we will now offer an Inclusion Preschool Program for the 2023-24 school year at Brass Castle School. The Washington Township School District's preschool program is designed to promote an active participatory learning process where children make daily choices about their activities, and teachers help them cultivate language, fine and gross motor skills, and social skills as they play. Our programs adhere to the state's high-quality preschool guidelines.



To apply for the program, children must be 3-years old by October 1, 2023, and no older than 4-years old on October 1, 2023, to be considered.

Lottery applications are now available for prospective families. If you are a resident of the Washington Township School District and your child is 3 or 4 years old on October 1, 2023, he/she may be considered for our program. In the event that the District does not have enough

preschool “seats” for all of our prospective students, we will use a lottery system. All applications are given an equal chance of selection, so long as the due date is met. There is no first-come, first-serve consideration. There is no guarantee siblings will be chosen to attend the program.

The lottery is a standardized process implemented by the Washington Township School District when there are more interested families than there are seats available. After a period of open enrollment, all considered families will be entered into the lottery and drawn at random for admission to the school. After available seats for each program are filled, remaining names will be drawn and added to a waitlist in the order they are drawn.

This newsletter will provide you with information about our preschool program. If you would like to apply for the preschool lottery, please complete the Preschool Lottery form and submit to Ms. Rachael Rhinehart, Brass Castle School Secretary at rrhinehart@washtwpsd.org by May 17, 2023. You may also contact Dr. Jessica Garcia, Brass Castle School Principal, with any questions regarding the program at jgarcia@washtwpsd.org.

Sincerely,
Keith Neuhs
Superintendent



Preschool Lottery Application.pdf

Download

122.5 KB

WHAT IS AN INCLUSION PRESCHOOL PROGRAM?

The Inclusion Preschool Program (IPS) facilitates an opportunity for general education preschoolers to interact with special education peers. Teachers of an IPS program are certified in both general and special education. Students with special needs are placed in the program through an evaluation process performed by the Child Study Team.

WHAT EARLY CHILDHOOD CURRICULUM IS USED?

The early childhood curriculum used in the preschool program is the *Creative Curriculum*. A key feature of this research-based curriculum is the “active participatory learning” process where children make daily choices about their activities and teachers help them cultivate language, develop self-regulation skills, fine and gross motor skills, and social skills as they play.



WHAT IS THE PRESCHOOL SCHEDULE?

All children in the program will attend **five** full days a week (no exceptions to the schedule will be made). Preschoolers follow the 2023-24 District calendar.

Preschool Program Hours

8:50 AM - 3:10 PM

HOW MANY SEATS ARE AVAILABLE?

- The district will have a maximum of 16 seats for general education students in the 2023-24 school year.
- Note, this lottery is not applicable to students with current district special education programs. Please contact Ms. Caryn Kaluzny, Child Study Team Secretary at ckaluzny@washtwpsd.org or Dr. Jessica Garcia, Director of Child Study Team at jgarcia@washtwpsd.org with any questions.



HOW DOES THE LOTTERY WORK?

In the event that the District does not have enough preschool “seats” for all of our children, we will use a lottery system.

A lottery process will be held to **randomly** select the students who will participate in the program for the 2023-24 school year. There is no priority granted for applications that arrive first. When the number of students needed to fill the available preschool spots is reached, applications will continue to be drawn and this group of students will be the basis of the preschool waiting list. If a student drops out or declines a placement and a vacancy occurs, we will go to the next name on the waitlist and that student’s parents will be contacted. Parents of selected students will be notified by mail and email following the lottery. *The preschool lottery will be held on Wednesday, May 24, 2023 at 4:00pm in the Brass Castle School library.*

You do not need to be present at the lottery to accept admission. You will receive a confirmation email and letter if your child is accepted into the program or otherwise.

WHAT IS THE COST OF THE PROGRAM?



To subsidize the cost of this program, the Washington Township Board of Education is charging tuition for each **accepted** general education child in the amount of \$500 per month for the 10-month program (\$5000 total for 10 months). Each family that is **accepted** into the program will be required to send a \$500 tuition deposit by **July 1, 2023 (made payable to Washington Township Board of Education)**. This will cover tuition for September. Tuition each month will be due on the first of the month, starting on October 1st. The last payment for the year will be due on June 1st. If a family does not remain current with their tuition payments, the student will be removed from the program.

Note, this is not applicable to students with current special education district programs.

Please note, if the Washington Township School District receives a New Jersey Preschool Expansion Grant for the 2023-24 school year, tuition for general education students will be waived while grant funding is available.

HOW DO I REGISTER TWINS IN ONE FAMILY?

Same-aged siblings (twins, triplets) in a family are registered separately and have an equal chance of being selected in the lottery. If one of the siblings is selected for a seat, it is not a guarantee the other sibling(s) will be selected as well.

ARE THERE ANY PRIORITIES FOR THE LOTTERY?

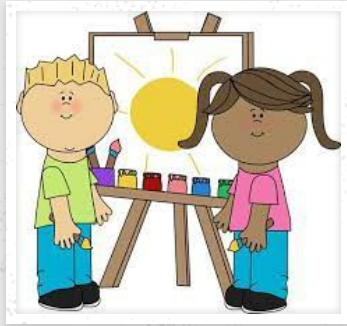
No. Children who are siblings of students who have participated in our previous preschool programs or have siblings in the schools are not granted priority.

WHAT HAPPENS AFTER THE FIRST YEAR?

Children who are accepted into our preschool program as 3-year-olds are automatically enrolled in the program for the next school year unless a parent chooses to unenroll them.



Children who are accepted as 4-year-olds must register for our kindergarten program, during Kindergarten Registration, for the next school year unless a parent chooses to enroll them elsewhere.



MY CHILD HAS AN IEP, IS HE/SHE INCLUDED IN THE LOTTERY?

Children with special needs/IEP's do not participate in the lottery. As per NJDOE administrative code, your child will automatically have a seat in our preschool program and receive any/all related services specified in his/her IEP.

TOILETING FYI

General education students accepted into the program must be toilet-independent by September 1, 2023.



WASHINGTON TOWNSHIP SCHOOL DISTRICT

📍 1 East Front Street, Washingt... 📞 908-689-1119

🌐 washtwpsd.org