



**WASHINGTON
TOWNSHIP**
SCHOOL DISTRICT

BRASS CASTLE SCHOOL
16 Castle Street
Washington, NJ 07882
908.689.1188
Jessica L. Garcia, PRINCIPAL

**DISTRICT CENTRAL OFFICE
OLD SCHOOLHOUSE**
One East Front Street
Washington, NJ 07882
908.689.1119
Keith T. Neuhs, SUPERINTENDENT

PORT COLDEN SCHOOL
30 Port Colden Road
Washington, NJ 07882
908.689.0681
Jessica K. McDonagh, PRINCIPAL

January 3, 2022

Dear Parents & Guardians,

The number of COVID-19 cases continues to rise in the area. To assist the school in maintaining in-person learning, please follow all health and safety guidelines. Please understand that the district is trying to follow NJ Health Department requirements and that their information to schools continues to evolve.

- If your child is sick, do not send them to school. Contact your school nurse and they will provide you with information regarding whether your child may attend school or, if needed, how long to quarantine. Students that test positive for COVID-19 will need to quarantine for 10 days. Close contacts of individuals with COVID-19 will quarantine for 10 days (quarantine period will be longer if the close contact of a positive case is a household member). The quarantine periods are established by the New Jersey Department of Health.
- Please complete your child's daily health screening in OnCourse Connect each day.
- If your child becomes ill during the school day, you must come and pick them up as soon as possible. Make sure to have an emergency contact that is available to pick up a sick child.
- Students that are quarantined due to COVID-19 circumstances (positive, symptomatic, close contact, etc.), will have access to livestream instruction during the quarantine period. Please note that the teacher may need a day to prepare and set your child up for livestream lessons. During livestreaming, the teacher will not be able to answer all of your child's questions as they have students in the classroom. Assignments will be posted in TEAMS.
- If a person in the household has tested positive for COVID-19, keep the student home, and contact the school nurse for quarantine information. Reminder, close contacts of positives in the same household will require an extended quarantine period.
- If a household member is awaiting COVID-19 test results due to a possible exposure and / or COVID like symptoms, do not send the student to school. Contact your school nurse to determine the possible quarantine period.

It is the district's intentions to continue with in-person learning, but please be aware that if the district experiences staff shortages a temporary move to remote learning may be necessary.

COVID-19 Testing

To assist parents and guardians with COVID-19 testing, the district is working with Mirimus lab to provide free weekly testing for students. This testing opportunity is voluntary and will be offered each Wednesday from 4:00pm – 5:00pm at the Brass Castle School with parent transportation required.

To participate in the school-based option:

1. Parents/guardians **must** complete a Consent / HIPPA form at:
<https://hipaa.jotform.com/212774814091053>
 - Note the testing is free and insurance is not required. As per the contract with the state, Mirimus will ask for health insurance information, but it is not required to participate.

2. Wednesdays 4:00pm – 5:00pm bring your child to Brass Castle School. Testing is for students only.
3. Testing will take place in the front driveway of the building. **Parents & student(s) must stay in the car at all times.**
4. When you pull up to the school, you will be given a test kit. This is a saliva (PCR) test and does not require a nose swab. While the student takes the test, the parent / guardian will complete an information label.
5. The completed test kit will be deposited in a sample box.
6. Test samples are express mailed via UPS and results are typically available in 48-72 hours. Please note, test results are shared with the school district and the NJ Health Department.
7. Students may be tested every week or just as needed. The Consent / HIPPA form only needs to be completed one time.

Important Notes:

- If a student is utilizing this test service because they have symptoms or possible exposure, he/she must quarantine until the test results are received.
- Students that participate in this voluntary testing do not need to quarantine while awaiting surveillance test results, if they are symptom free and do not meet any other quarantining circumstances.

Sincerely,

Keith Neuhs
Superintendent

Video Directions for SalivaClear Testing:

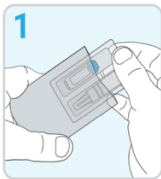
<https://vimeo.com/582257825>



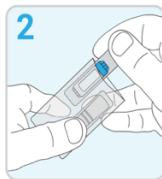
Self-Collection Kit Instructions

- This kit is for saliva collection only.
- Do not deposit mucus, phlegm, blood, other substances, or foreign objects.
- Do not eat, drink, smoke, chew gum, or brush your teeth at least 30 minutes prior to providing your sample.
- Do not use mouthwash for at least 2 hours prior to providing your sample.

Self-Collection Kit Instructions



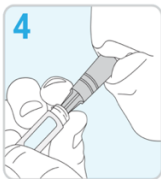
Open collection kit sample bag and remove all contents.



Take sample collection tube and saliva straw out of sterile package.



Unscrew collection tube cap and insert ridged end of saliva straw into tube.



Pool saliva in mouth and push saliva into tube until at least half full (1 mL).



Remove and discard straw and securely cap collection tube.



Place collection tube in sample kit bag, seal, and return to collection site.

- Kit is for SALIVA collection only.
- Do not deposit mucus, phlegm, blood, other substances, or foreign objects.
- Do not eat, drink, smoke, vape, chew gum, or brush your teeth at least 30 minutes prior to providing your sample.
- Do not use mouthwash for at least 2 hours prior to providing your sample.
- REMOVE Sample Collection Tube from Sample Bag before sending samples to lab.

Proper Sample Collection Volume

