



# **WASHINGTON TOWNSHIP SCHOOL DISTRICT 2011 – 2012 TESTING REPORT**

**Presented: January 7, 2013**

## Standardized Assessments

The following test was administered by the NJ State Department of Education:

- NJ ASK – New Jersey Assessment of Skills and Knowledge
  - Grades 3-6

The following test was administered by our school:

- NJ PASS – New Jersey Proficiency Assessment of State Standards (Riverside Publishing Company)
  - Grade 2



# NJ ASK AND NJ PASS ASSESSMENT TYPES

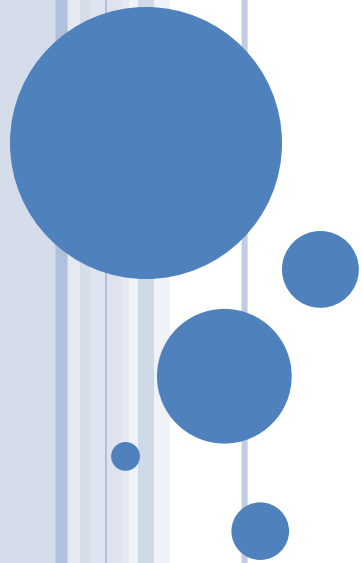
The NJ ASK and NJ PASS are criterion-referenced tests.

A criterion-reference test:

- ❑ Measures achievement of specific criteria or skills in terms of absolute levels of mastery; and
- ❑ The focus is on performance of an individual as measured against a standard or criteria (i.e. New Jersey Core Curriculum Content Standards for Language Arts Literacy and Mathematics), rather than against performance of others who take the same test, as with norm-referenced tests.



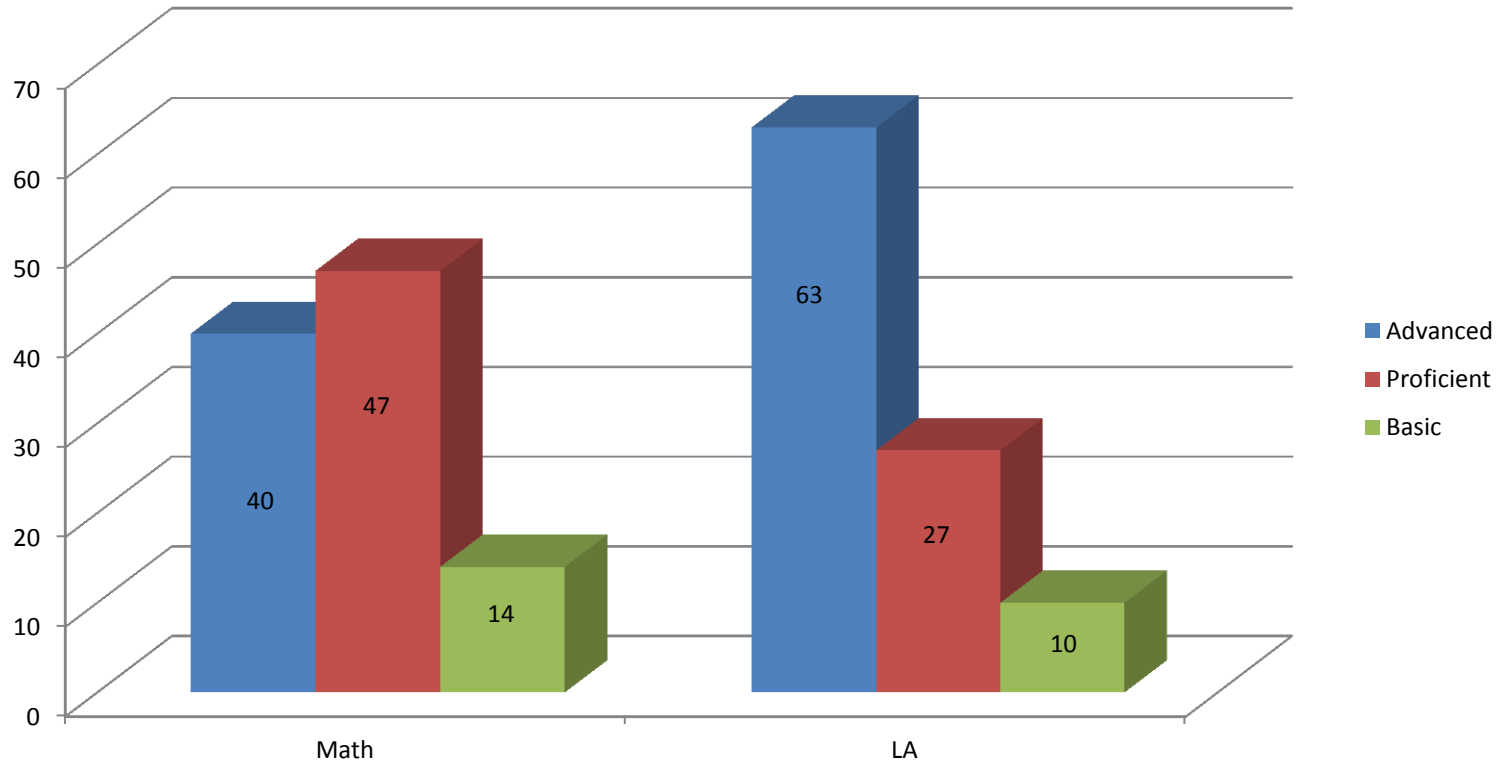
# **NJPASS TESTING 2012**



# GRADE 2 – DISTRICT PERFORMANCE

## NJPASS Results

	Advanced	Proficient	Basic
Math	40	47	14
LA	63	27	10



## Grade 2 NJPASS Results - 2012

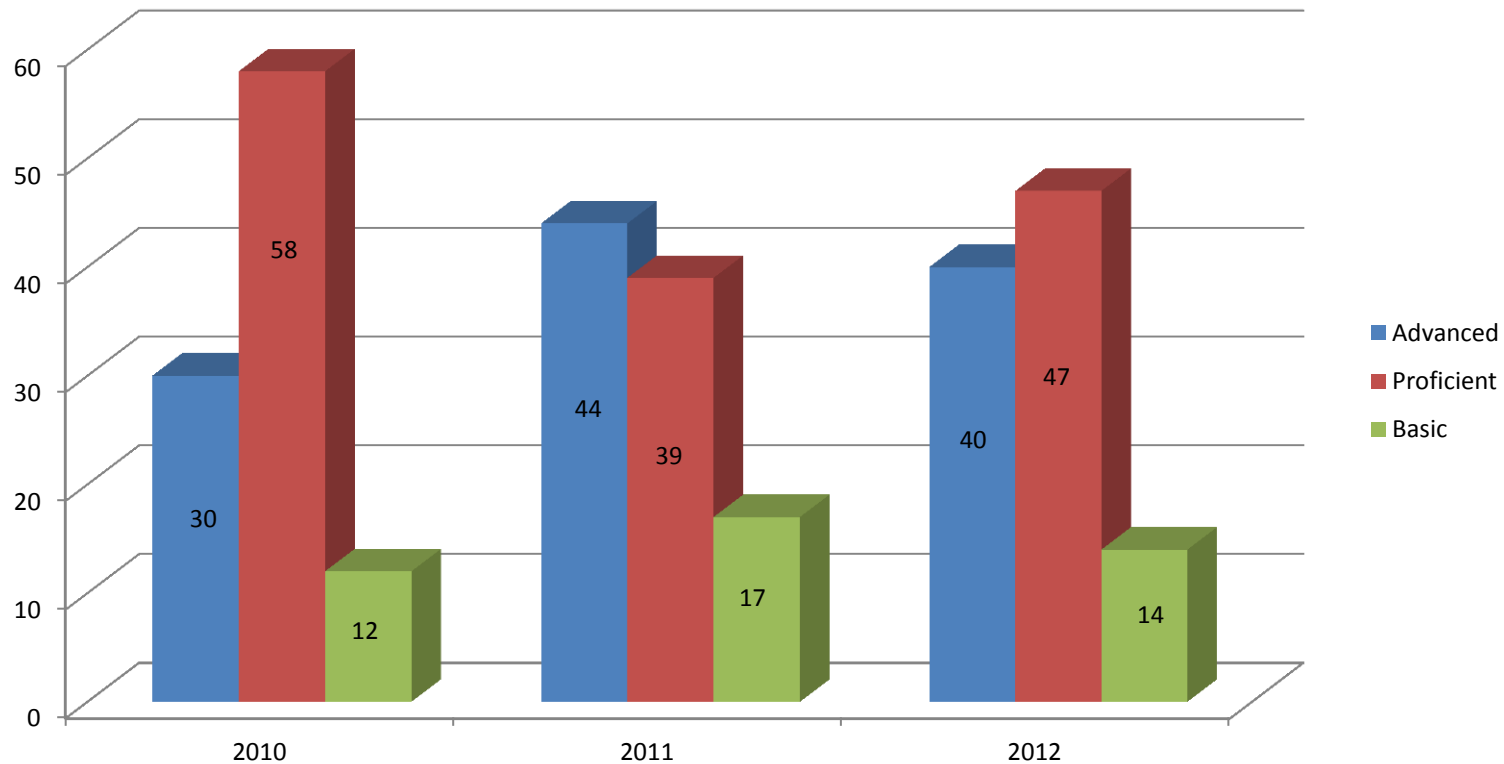
Language Arts	Possible Points	Avg. Pts. Earned	% Pts. Earned
Reading: Working with the Passage	16	11.9	74%
Reading: Analyzing the Passage	10	6.7	67%
Listening: Working with the Passage	4	3.1	77%
Listening: Analyzing the Passage	4	2.3	58%
Writing: Content, Development & Convention	8	5.5	70%
Math	Possible Points	Avg. Pts. Earned	% Pts. Earned
Number Sense, Operations & Properties	14	10.7	77%
Measurement	6	4.1	68%
Spatial Sense & Geometry	6	5.6	93%
Data Analysis, Probability & Discrete Math	7	5.1	72%
Patterns & Algebra	7	5.0	76%



# GRADE 2 – CLASS PERFORMANCE

## NJPASS – Math

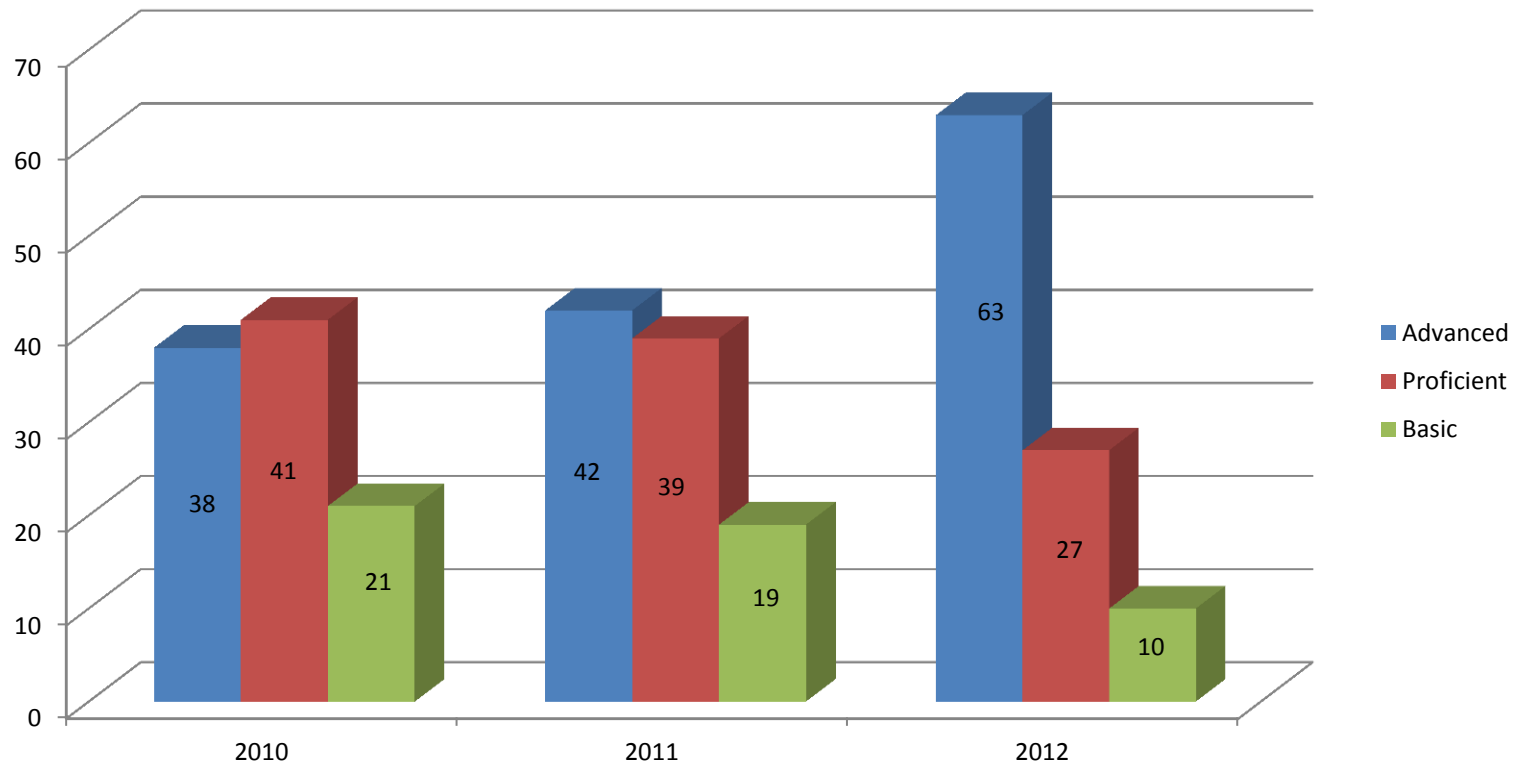
Math	2010	2011	2012
Advanced	30	44	40
Proficient	58	39	47
Basic	12	17	14



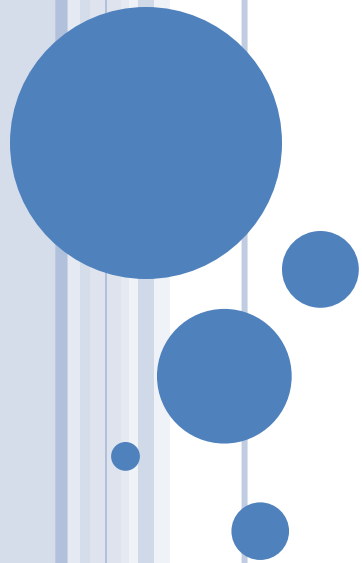
# GRADE 2 – CLASS PERFORMANCE

## NJPASS – Language Arts

LA	2010	2011	2012
Advanced	38	42	63
Proficient	41	39	27
Basic	21	19	10



# **NJASK TESTING 2012**



## New Jersey Assessment for Skills and Knowledge (NJASK) Three Levels of Achievement

- **Partially Proficient** means a score achieved by a student is below the cut score or just proficient mean. The student demonstrated minimal understanding of the content. A partially proficient score is a score of 0-199.
- **Proficient** means a score achieved by a student at or above the cut score or just proficient mean which demonstrates a solid understanding of the content measured by an individual section of any state assessment. A proficient score is a score of 200-249.
- **Advanced Proficient** means a score achieved by a student at or above the cut score or just proficient mean which demonstrates a comprehensive and in-depth understanding of the content measured by an individual section of any state assessment. An advance proficient score is a score of 250-300.



**Specifics of the  
Grades 3, 4, 5 & 6  
Assessment of Skills and  
Knowledge**



## GRADES 3, 4, 5 & 6 READING

- ❑ NJ ASK 3-5 operational tests included three reading passages at each grade level;
- ❑ NJ ASK 6 test included four reading passages;
- ❑ Reading passages included literature as well as informational or “everyday” reading selections from a wide array of sources and genres; and
- ❑ Additional field-test passages and items were included.



# GRADES 3, 4, 5 & 6 WRITING ASSESSMENT

- LAL writing tasks required students to respond in a variety of modes and forms (e.g., speculative, explanatory/expository, persuasive narrative) and for a variety of purposes, in keeping with standard 3.2 of the CCCS;
- The speculative prompt presented a brief scenario which students used as a springboard for writing a story, drawing on stories they have read as well as on their own experiences;
- Explanatory/expository prompts presented students with a topic based on a quotation or adage, or based on a familiar subject. Each is a springboard for the student to write an essay. Explanatory/expository writing was used to share knowledge and to convey ideas and experience. Explanatory/expository writing was based on the writer's personal knowledge and experience or on information presented to the writer; and
- Persuasive writing tasks elicited the student's point of view on a given controversy or topic arising from interpersonal, school/community, or social contexts.



# NJ ASK 3-6 MATHEMATICS

## 3 Types of Questions

- ❑ MC – Multiple choice
- ❑ SCR – Short constructed-response
- ❑ ECR – Extended constructed-response



# GRADE 3

NO FILL: ABOVE DFG & STATE MEAN; YELLOW: BELOW DFG; AND GREY: BELOW DEF & STATE MEAN

<b>Language Arts Literacy</b>	WTSD – Average Student Score	2012 Total Points Possible	2012 Just Proficient Mean	2012 DFG Mean (GH)	2012 State Mean
Writing	10.0	20	9.4	10.6	10
Expository Task	5.1	10	4.7	5.3	5.0
Speculative Task	4.9	10	4.7	5.3	5.1
Reading	15.4	30	13.6	16.4	15.2
Working with Text	5.2	8	4.5	5.4	5.0
Analyzing Text	10.3	22	9.2	11.0	10.2
<b>Mathematics</b>	WTSD – Average Student Score	2012 Total Points Possible	2012 Just Proficient Mean	2012 DFG Mean (GH)	2012 State Mean
Numbers / Numerical Operations	13.6	20	8.7	13.6	12.4
Geometry & Measurement	7.1	11	5.4	7.5	6.9
Patterns & Algebra	7.3	11	5.3	7.8	7.1
Data Analysis, Probability & Discrete Math	4.8	8	3.6	5.6	5.1
Problem Solving	11.7	18	8.0	12.1	11.0



# Grade 3 Class of 2015

Language Arts Literacy	Partially Proficient	Proficient	Advanced Proficient
Total Students	29	61	0
Percentage	32.0%	67.8%	0%

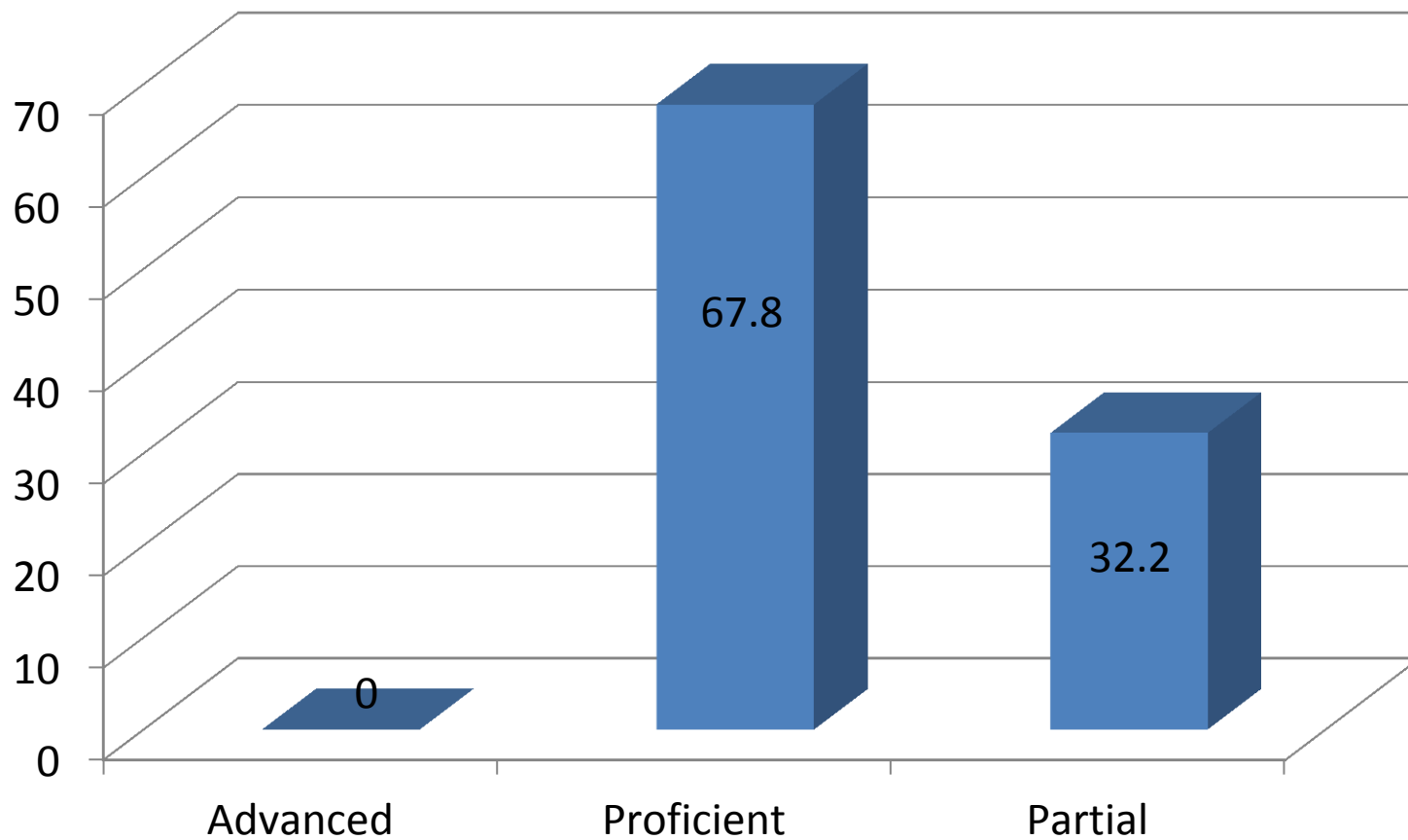
Mathematics	Partially Proficient	Proficient	Advanced Proficient
Total Students	18	33	39
Percentage	20%	37.8%	43.2%



# INDIVIDUAL CLASS SCORES – CLASS OF 2015

## LANGUAGE ARTS LITERACY

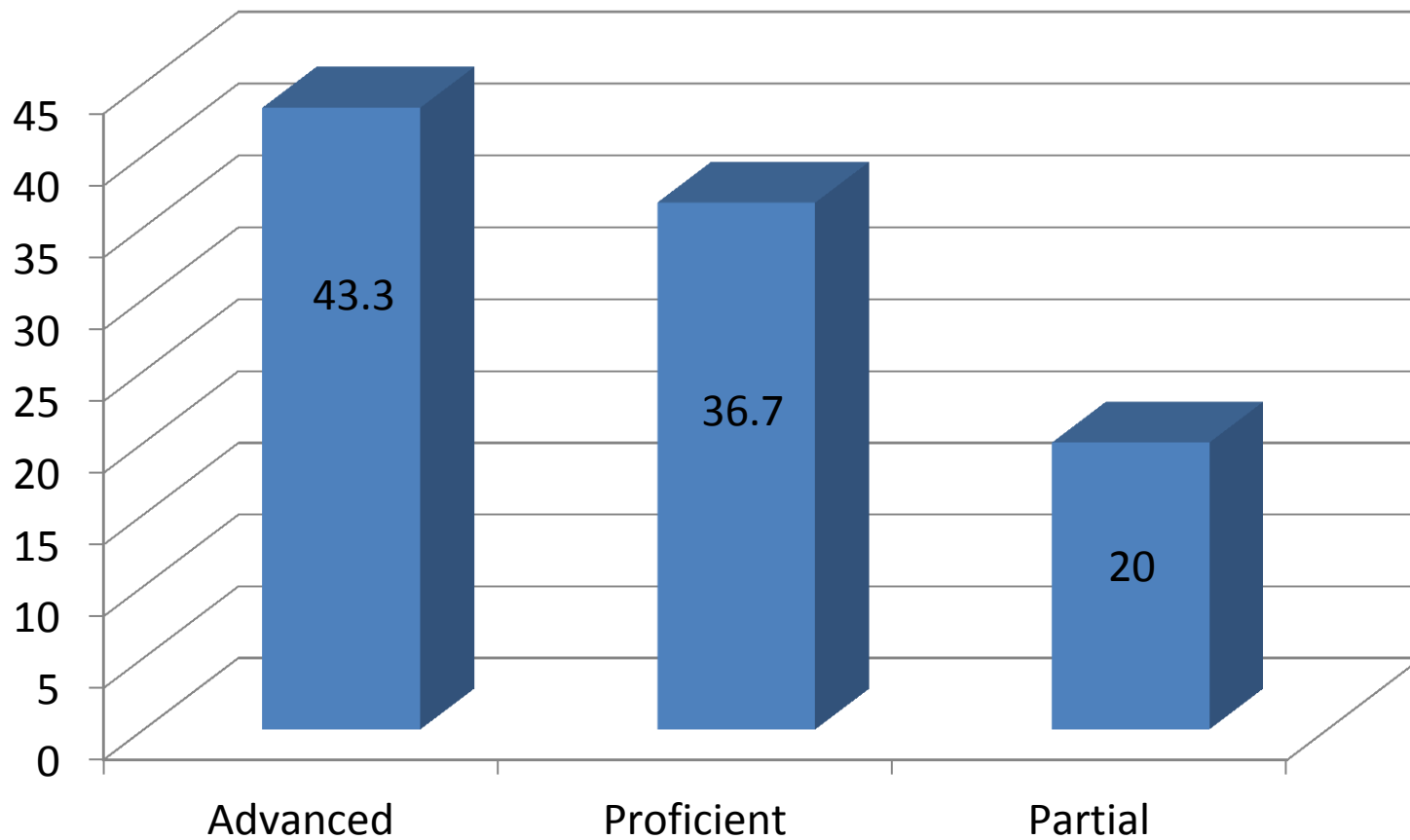
Spring 2012 – Language Arts Literacy



# INDIVIDUAL CLASS SCORES – CLASS OF 2015

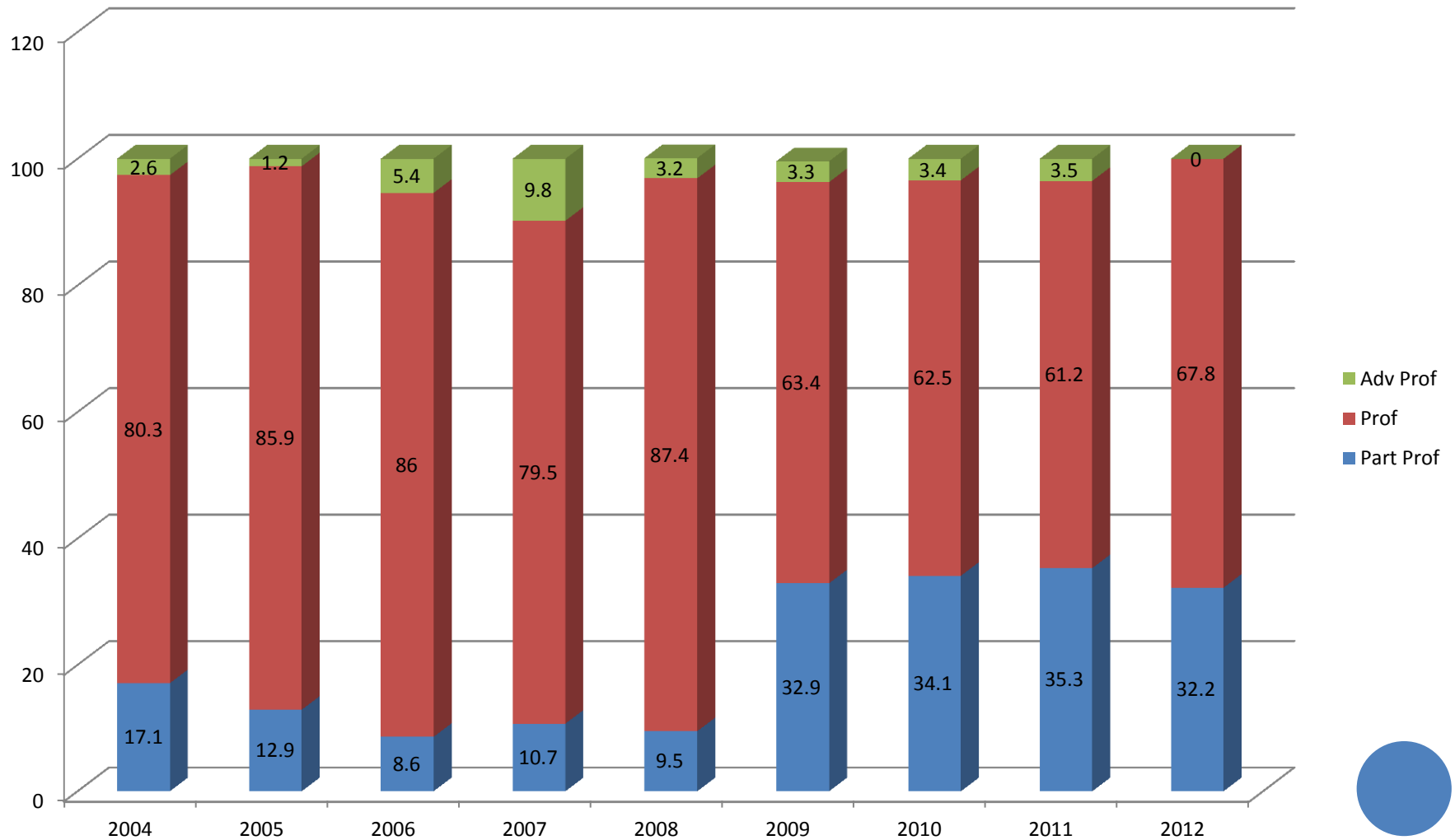
## MATHEMATICS

Spring 2012 – Mathematics

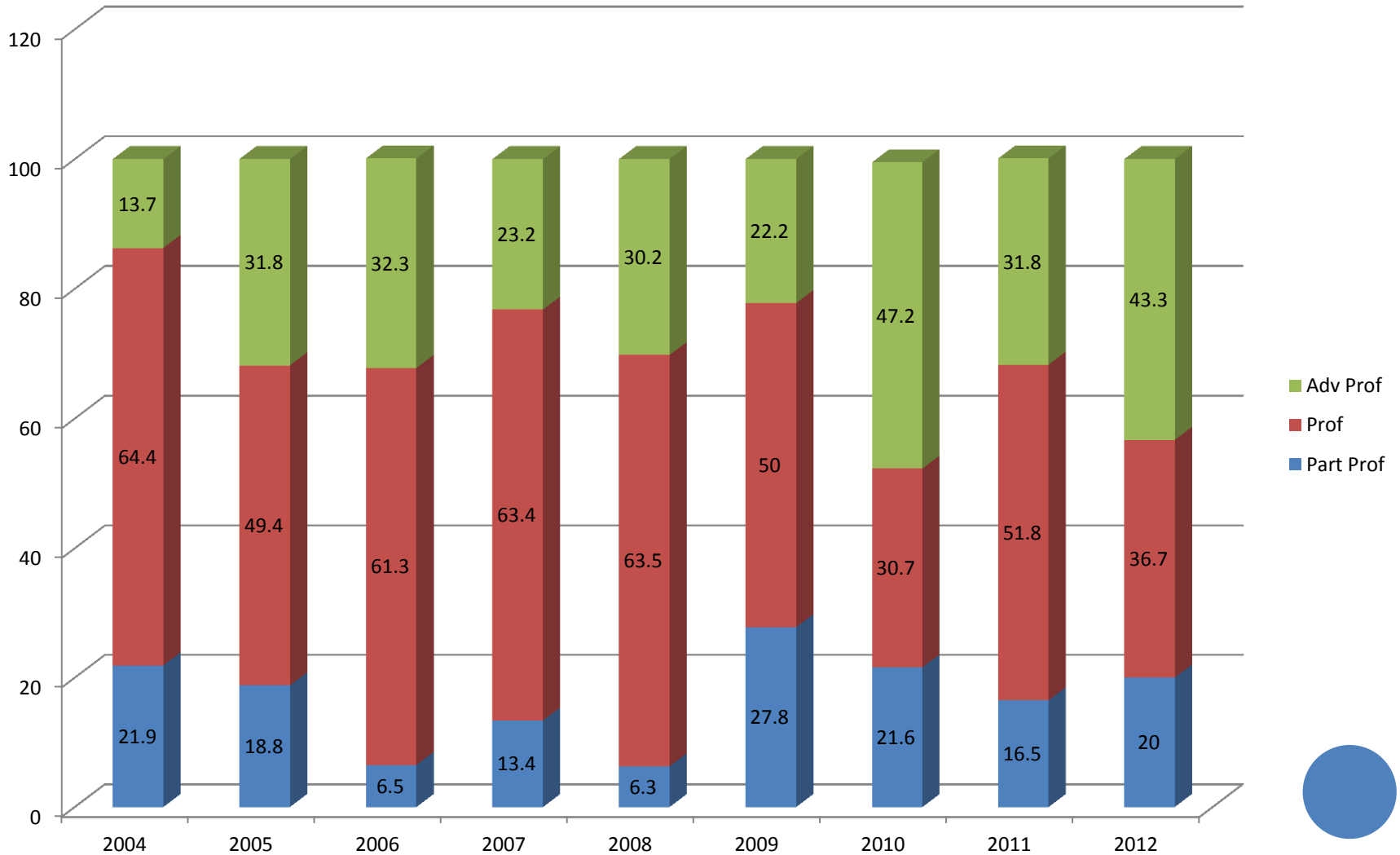


# GRADE LEVEL SCORES – GRADE 3

## LANGUAGE ARTS LITERACY



# GRADE LEVEL SCORES – GRADE 3 MATHEMATICS





# GRADE 4

NO FILL: ABOVE DFG & STATE MEAN; YELLOW: BELOW DFG; AND GREY: BELOW DEF & STATE MEAN

<b>Language Arts Literacy</b>	WTSD – Average Student Score	2012 Total Points Possible	2012 Just Proficient Mean	2012 DFG Mean (GH)	2012 State Mean
Writing	11.1	20	11.3	12.1	11.6
Expository Task	5.5	10	5.8	6.3	6.0
Speculative Task	5.6	10	5.5	5.8	5.6
Reading	18.1	36	18.7	20.3	19.0
Working with Text	7.0	13	7.2	8.0	7.4
Analyzing Text	11.1	23	11.4	12.3	11.5
<b>Mathematics</b>	WTSD – Average Student Score	2012 Total Points Possible	2012 Just Proficient Mean	2012 DFG Mean (GH)	2012 State Mean
Numbers / Numerical Operations	13.4	20	9.9	14.1	13.0
Geometry & Measurement	7.1	11	5.4	7.5	7.0
Patterns & Algebra	6.6	11	4.9	7.4	6.8
Data Analysis, Probability & Discrete Math	4.1	8	2.8	4.8	4.4
Problem Solving	12.5	20	9.1	13.7	12.6



# GRADE 4

NO FILL: ABOVE DFG & STATE MEAN; YELLOW: BELOW DFG; AND GREY: BELOW DEF & STATE MEAN

Science	WTSD – Average Student Score	2012 Total Points Possible	2012 Just Proficient Mean	2012 DFG Mean (GH)	2012 State Mean
Life Science	11.1	16	7.1	11.7	11.0
Physical Science	8.1	12	5.3	8.5	8.0
Earth Science	8.3	11	4.7	8.2	7.6
Knowledge	3.2	4	2.1	3.2	3.1
Application	24.3	35	14.9	25.2	23.6



# Grade 4 Class of 2014

Language Arts Literacy	Partially Proficient	Proficient	Advanced Proficient
Total Students	44	46	0
Percentage	48.9%	51.1%	0.0%

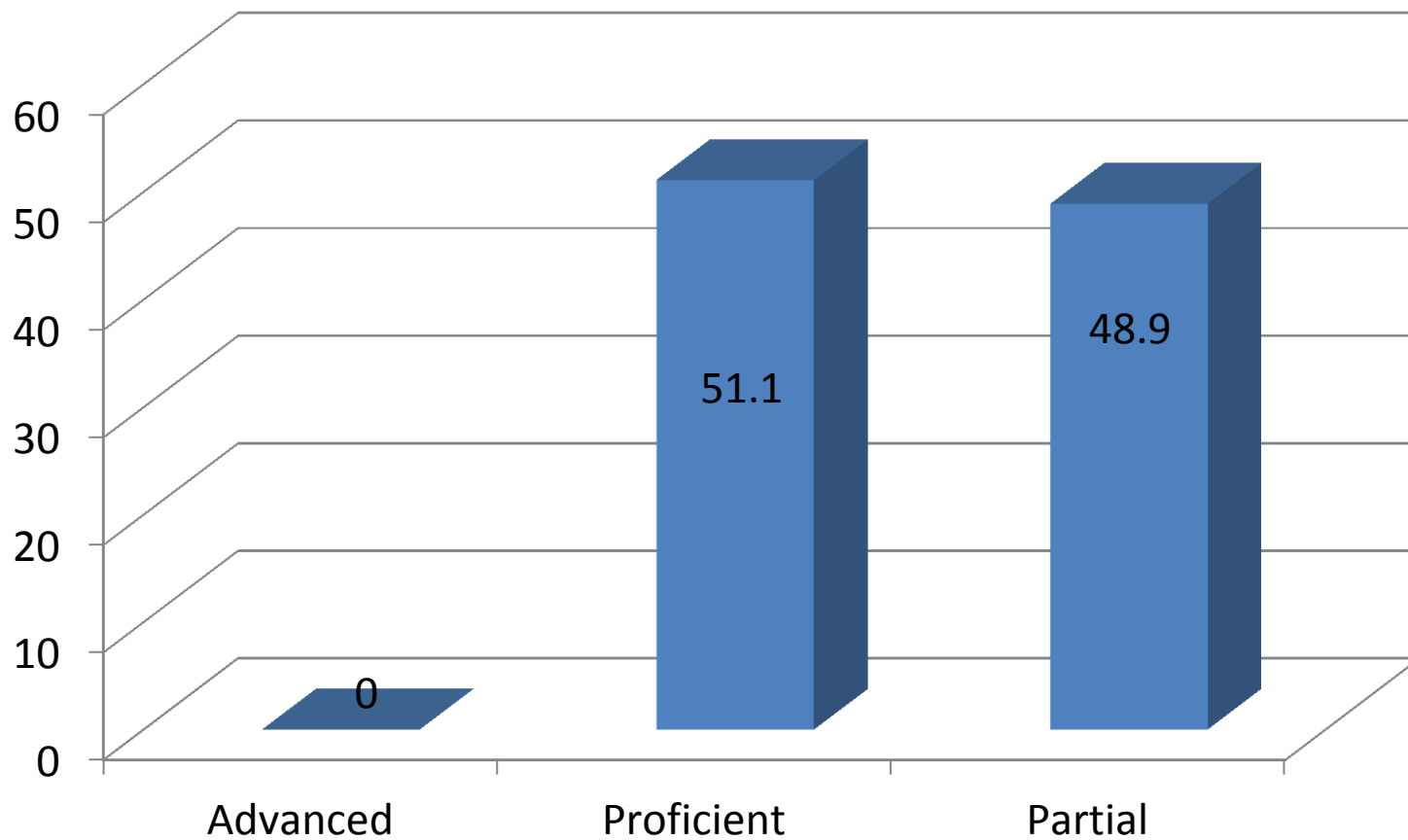
Mathematics	Partially Proficient	Proficient	Advanced Proficient
Total Students	19	42	29
Percentage	21.1%	46.7%	32.2%

Science	Partially Proficient	Proficient	Advanced Proficient
Total Students	4	38	47
Percentage	4.5%	42.7%	52.8%

# INDIVIDUAL CLASS SCORES – CLASS OF 2014

## LANGUAGE ARTS LITERACY

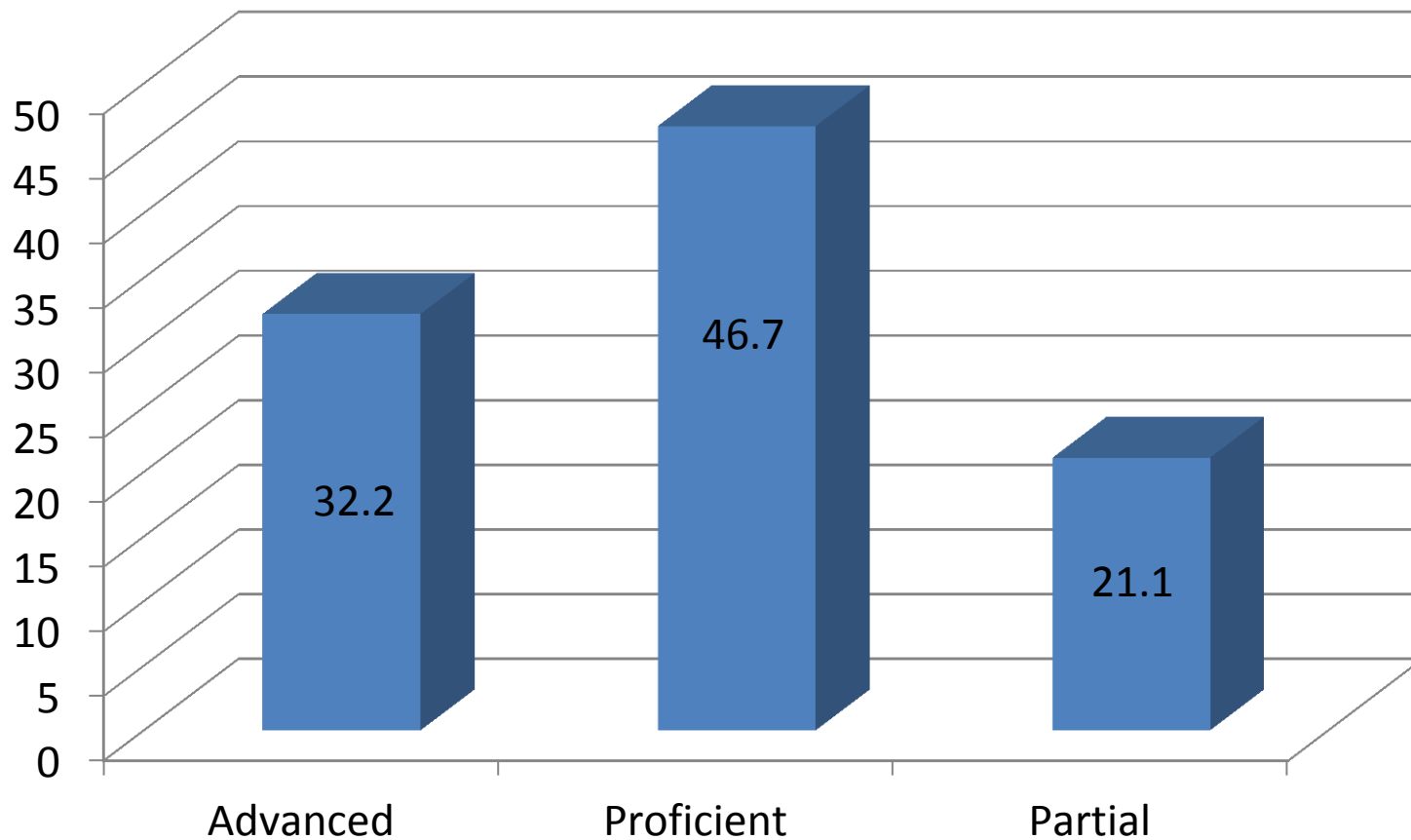
Spring 2012 – Language Arts Literacy



# INDIVIDUAL CLASS SCORES – CLASS OF 2014

## MATHEMATICS

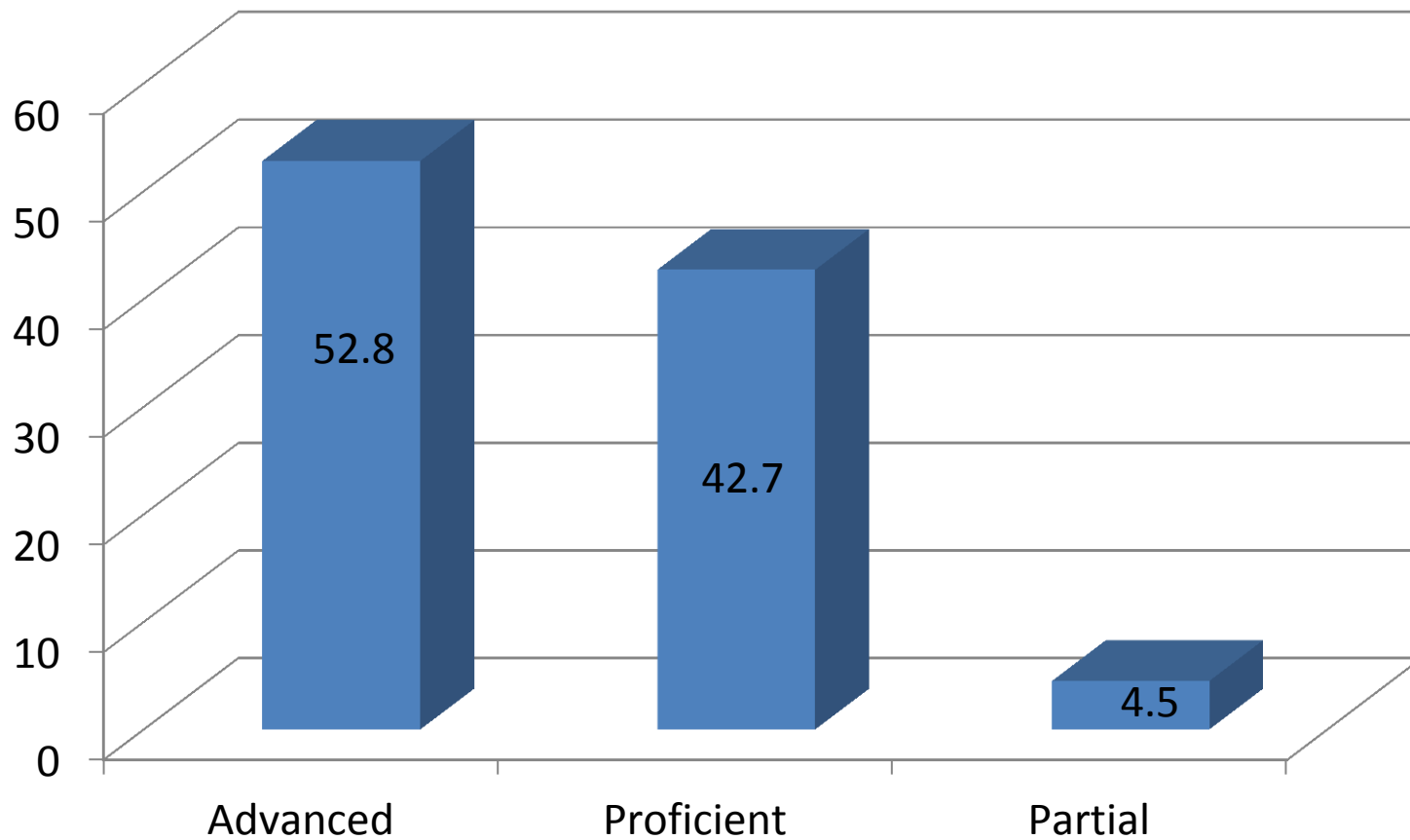
Spring 2012 – Mathematics



# INDIVIDUAL CLASS SCORES – CLASS OF 2014

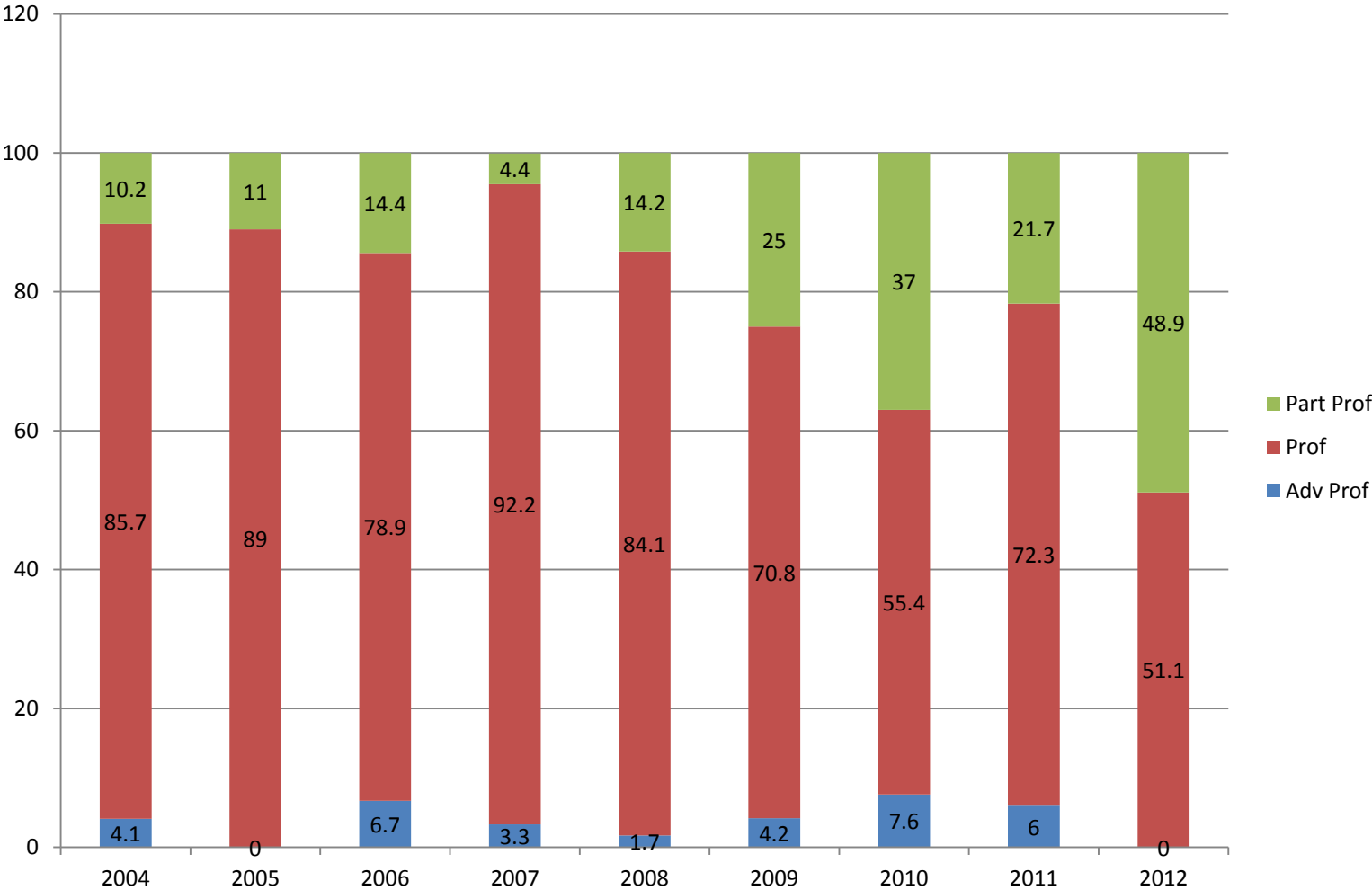
## SCIENCE

Spring 2012 – Science



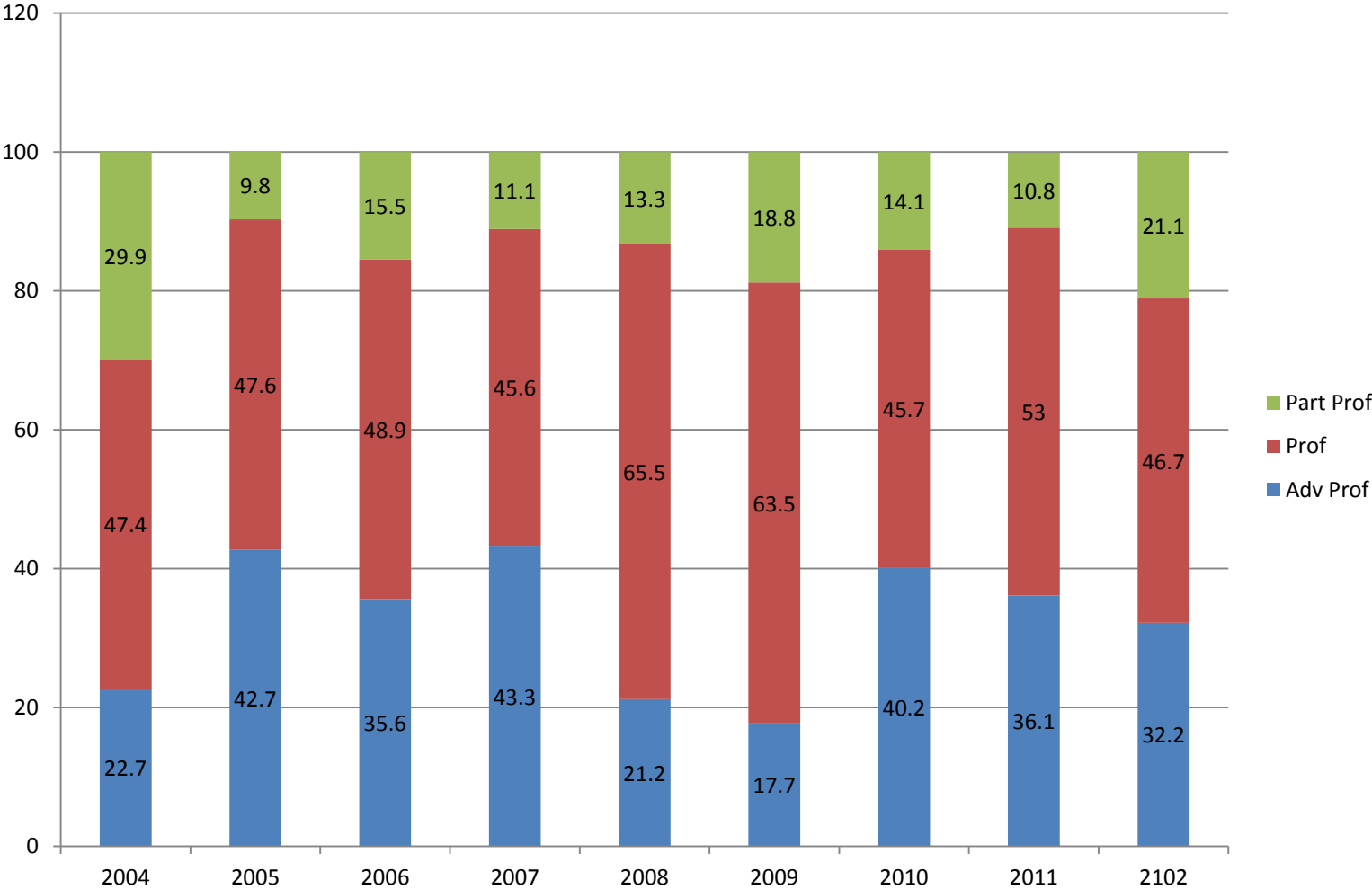
# GRADE LEVEL SCORES – GRADE 4

## LANGUAGE ARTS LITERACY



# GRADE LEVEL SCORES – GRADE 4

## MATH LITERACY



# GRADE 5

NO FILL: ABOVE DFG & STATE MEAN; YELLOW: BELOW DFG; AND GREY: BELOW DEF & STATE MEAN

<b>Language Arts Literacy</b>	WTSD – Average Student Score	2012 Total Points Possible	2012 Just Proficient Mean	2012 DFG Mean (GH)	2012 State Mean
Writing	11.6	20	11.1	11.9	11.3
Speculative Task	5.9	10	5.5	5.9	5.6
Expository Task	5.7	10	5.5	6.0	5.7
Reading	23.6	42	19.9	23.3	21.6
Working with Text	9.5	14	7.5	9.0	8.3
Analyzing Text	14.2	28	12.4	14.3	13.3
<b>Mathematics</b>	WTSD – Average Student Score	2012 Total Points Possible	2012 Just Proficient Mean	2012 DFG Mean (GH)	2012 State Mean
Numbers / Numerical Operations	12.0	18	7.6	12.5	11.6
Geometry & Measurement	11.2	16	7.4	11.4	10.7
Patterns & Algebra	6.0	8	4.3	6.3	5.9
Data Analysis, Probability & Discrete Mathematics	4.3	8	2.7	4.8	4.4
Problem Solving	10.9	19	6.5	11.6	10.7



# Grade 5 Class of 2013

Language Arts Literacy	Partially Proficient	Proficient	Advanced Proficient
Total Students	24	62	4
Percentage	26.7%	68.9%	4.4%

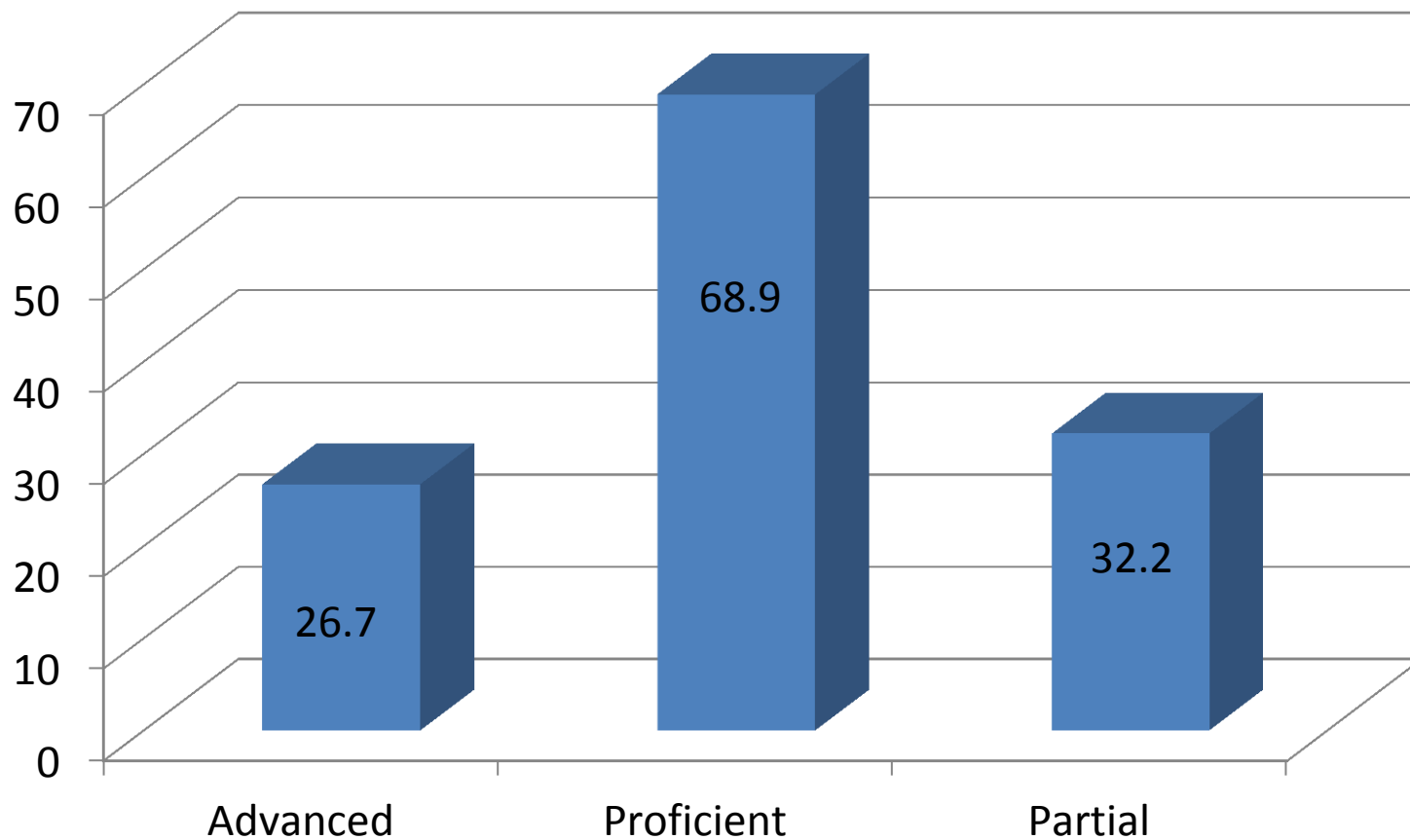
Mathematics	Partially Proficient	Proficient	Advanced Proficient
Total Students	8	47	35
Percentage	8.9%	52.2%	38.9%



# INDIVIDUAL CLASS SCORES – CLASS OF 2013

## LANGUAGE ARTS LITERACY

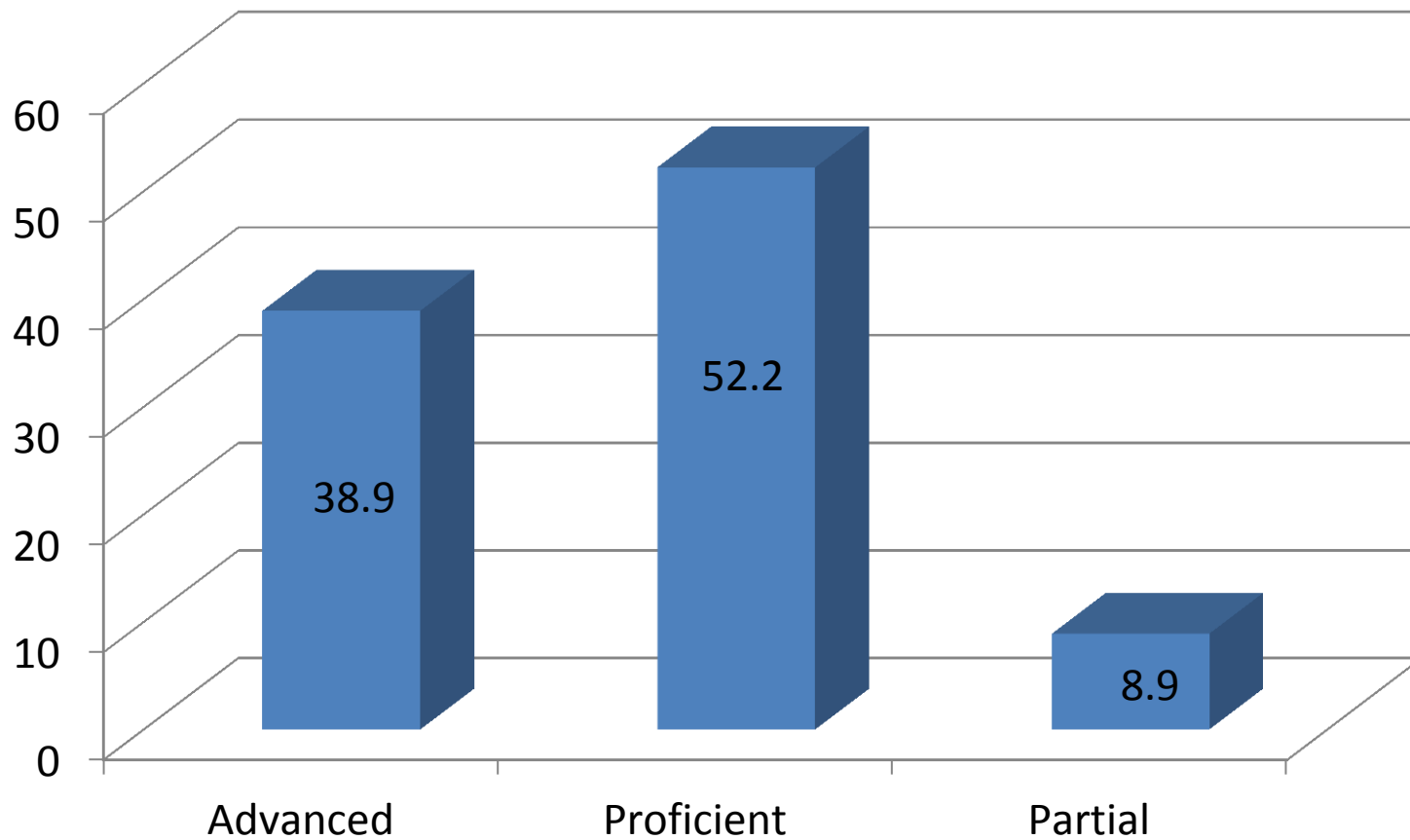
Spring 2012 – Language Arts Literacy



# INDIVIDUAL CLASS SCORES – CLASS OF 2013

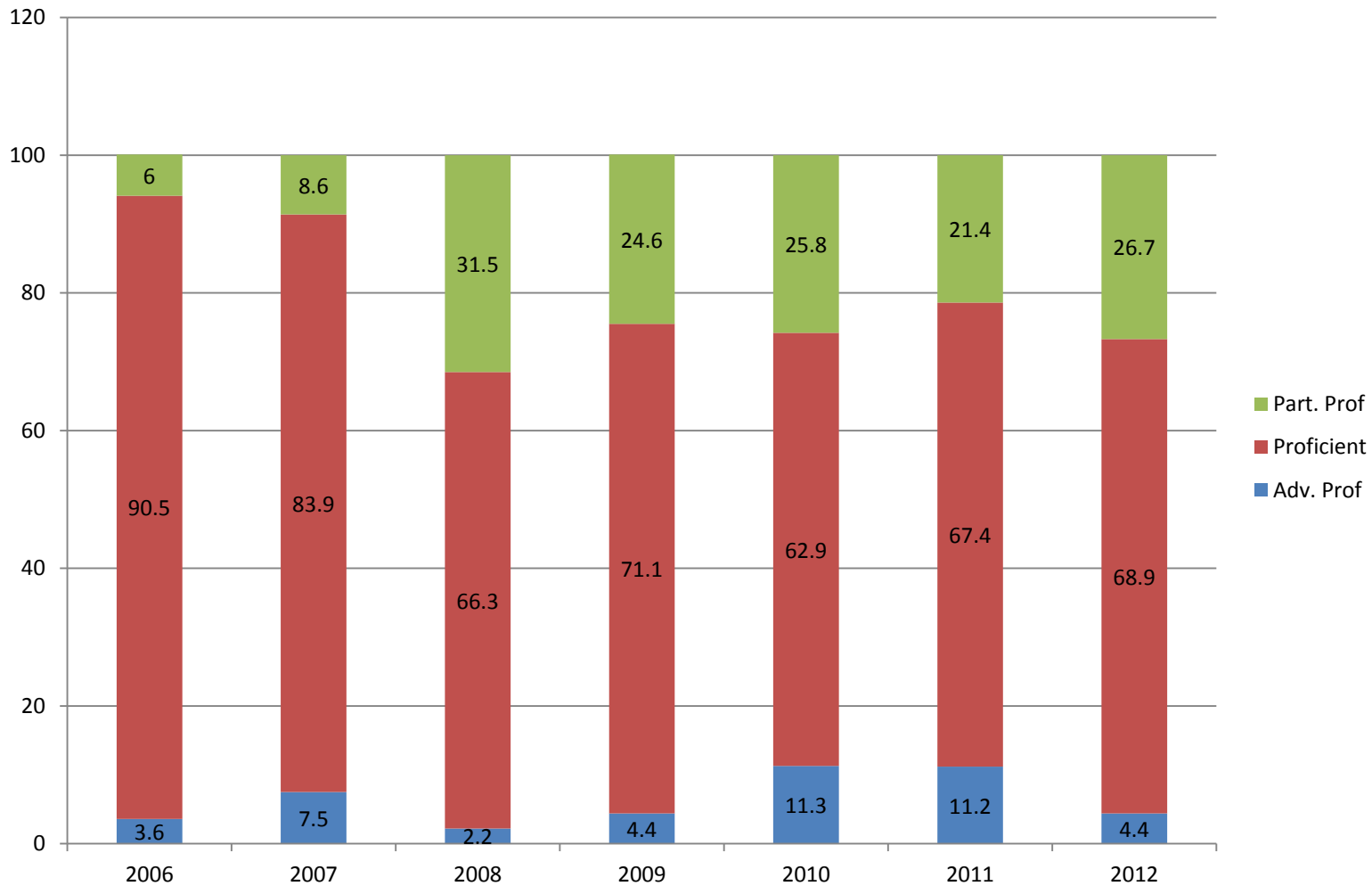
## MATHEMATICS

Spring 2012 – Mathematics



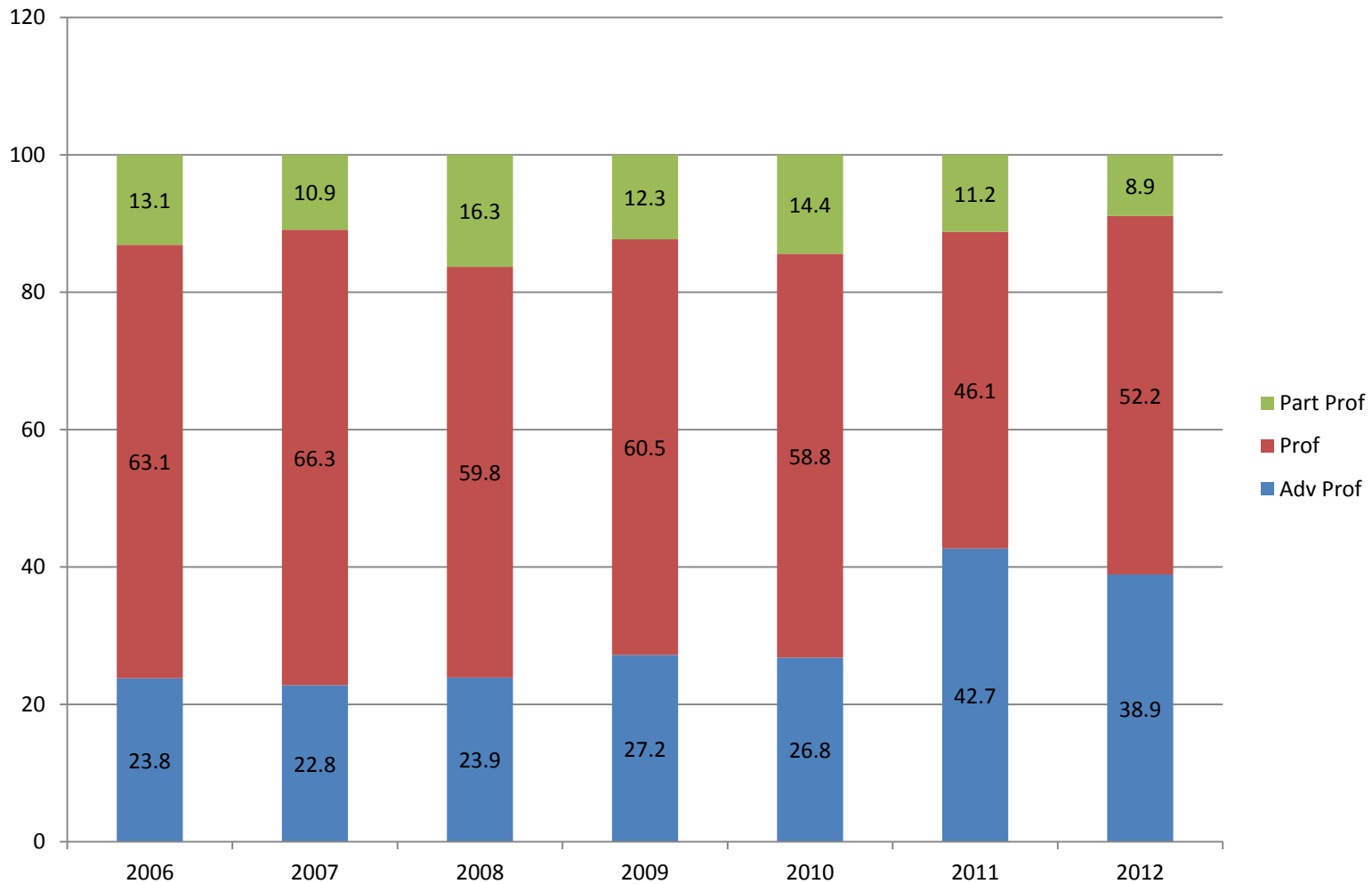
# GRADE LEVEL SCORES – GRADE 5

## LANGUAGE ARTS LITERACY



# GRADE LEVEL SCORES – GRADE 5

## MATH LITERACY



# GRADE 6

NO FILL: ABOVE DFG & STATE MEAN; YELLOW: BELOW DFG; AND GREY: BELOW DEF & STATE MEAN

<b>Language Arts Literacy</b>	WTSD – Average Student Score	2012 Total Points Possible	2012 Just Proficient Mean	2012 DFG Mean (GH)	2012 State Mean
Writing	10.1	18	9.8	10.6	10.1
Persuasive Task	6.6	12	6.5	7.0	6.6
Explanatory Task	3.5	6	3.3	3.6	3.5
Reading	31.4	52	26.7	31.3	31.4
Working with Text	16.0	23	13.2	15.5	16.0
Analyzing Text	15.3	29	13.5	15.8	15.3
<b>Mathematics</b>	WTSD – Average Student Score	2012 Total Points Possible	2012 Just Proficient Mean	2012 DFG Mean (GH)	2012 State Mean
Numbers / Numerical Operations	8.5	13	6.2	9.2	8.6
Geometry & Measurement	8.5	14	5.0	8.4	7.8
Patterns & Algebra	9.7	14	7.7	10.5	9.9
Data Analysis, Probability & Discrete Mathematics	5.3	8	4.1	5.9	5.4
Problem Solving	14.9	24	9.5	15.7	14.5



# Grade 6 Class of 2012

Language Arts Literacy	Partially Proficient	Proficient	Advanced Proficient
Total Students	20	65	4
Percentage	22.5%	73.0%	4.5%

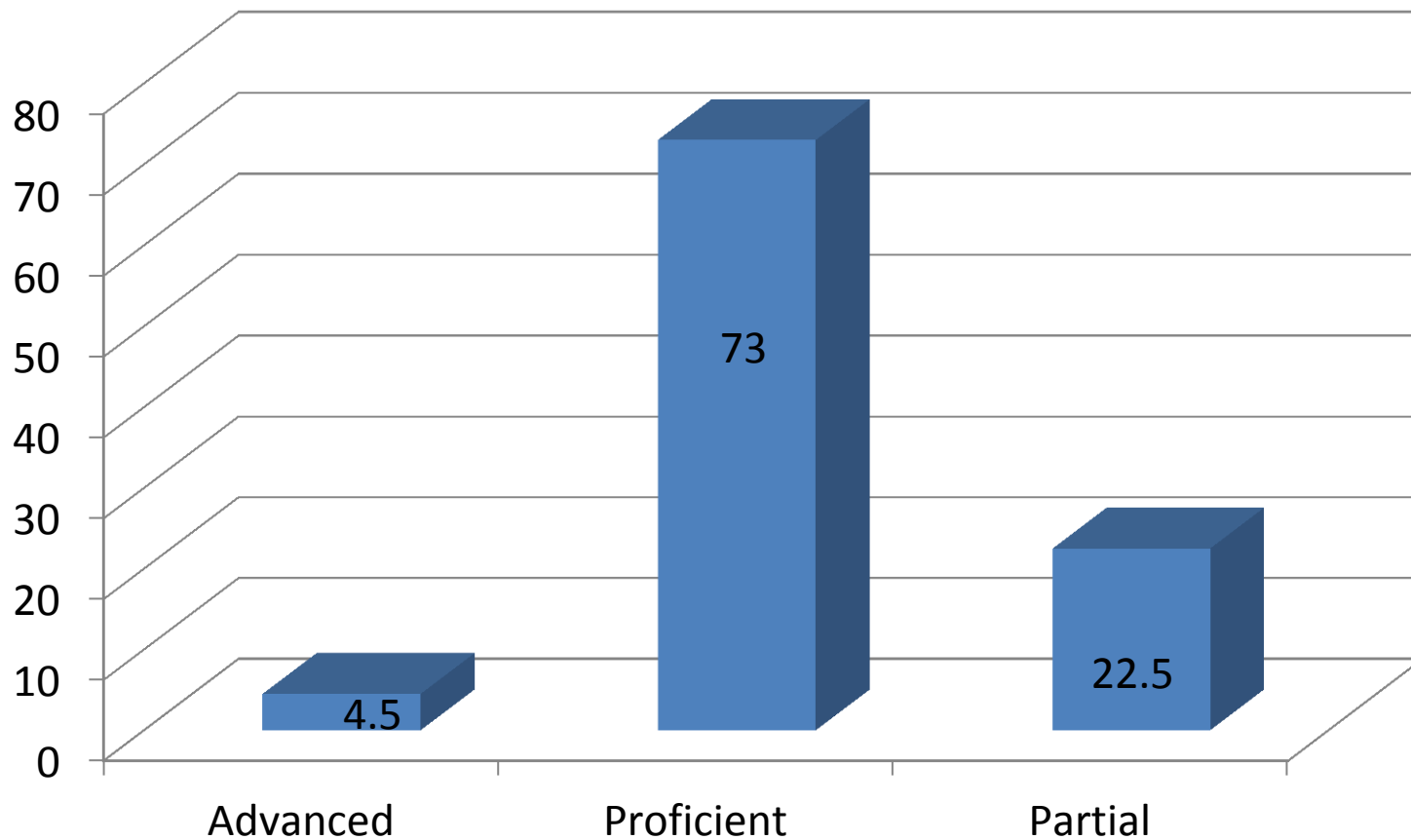
Mathematics	Partially Proficient	Proficient	Advanced Proficient
Total Students	17	45	27
Percentage	19.1%	50.6%	30.3%



# INDIVIDUAL CLASS SCORES – CLASS OF 2012

## LANGUAGE ARTS LITERACY

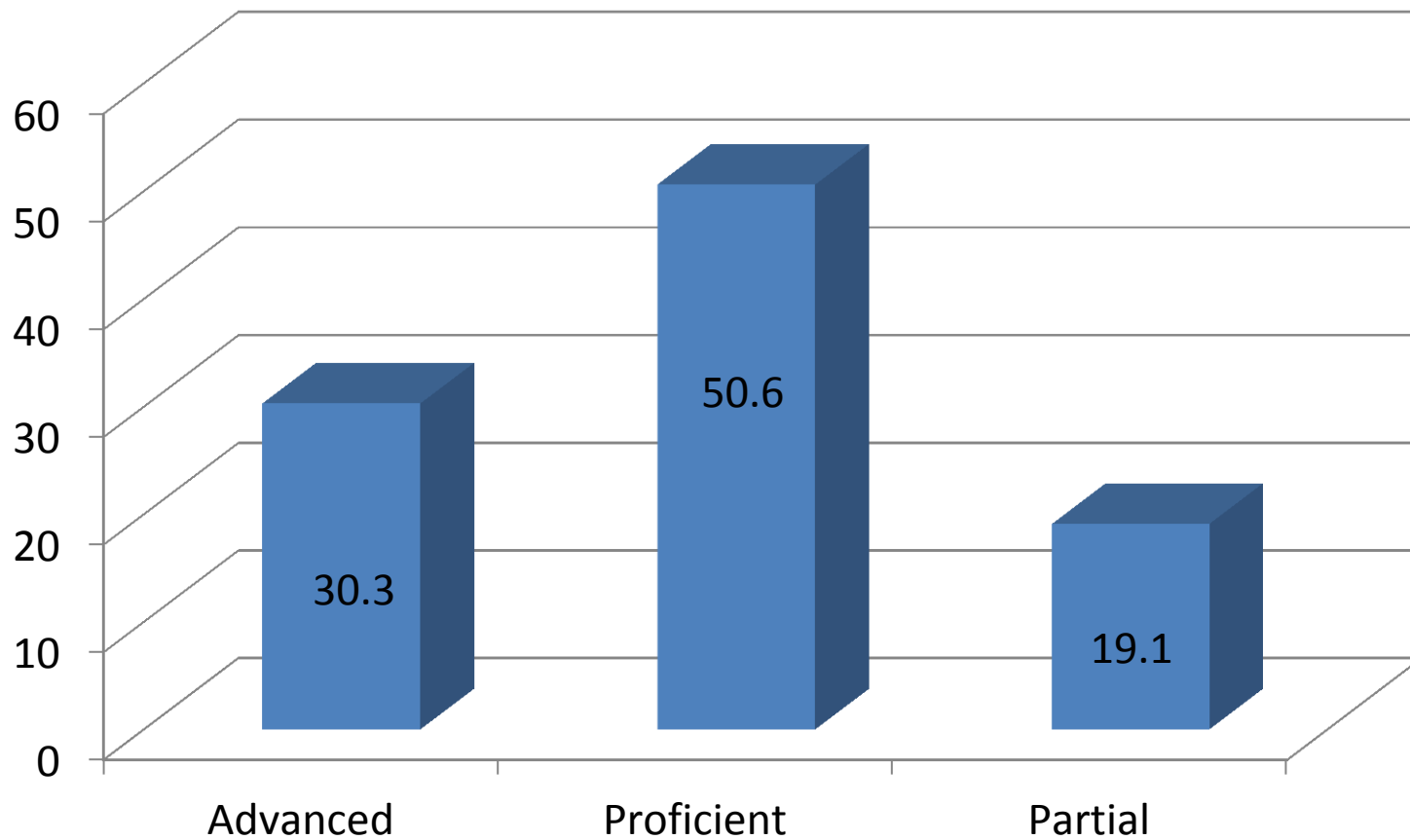
Spring 2012 – Language Arts Literacy



# INDIVIDUAL CLASS SCORES – CLASS OF 2012

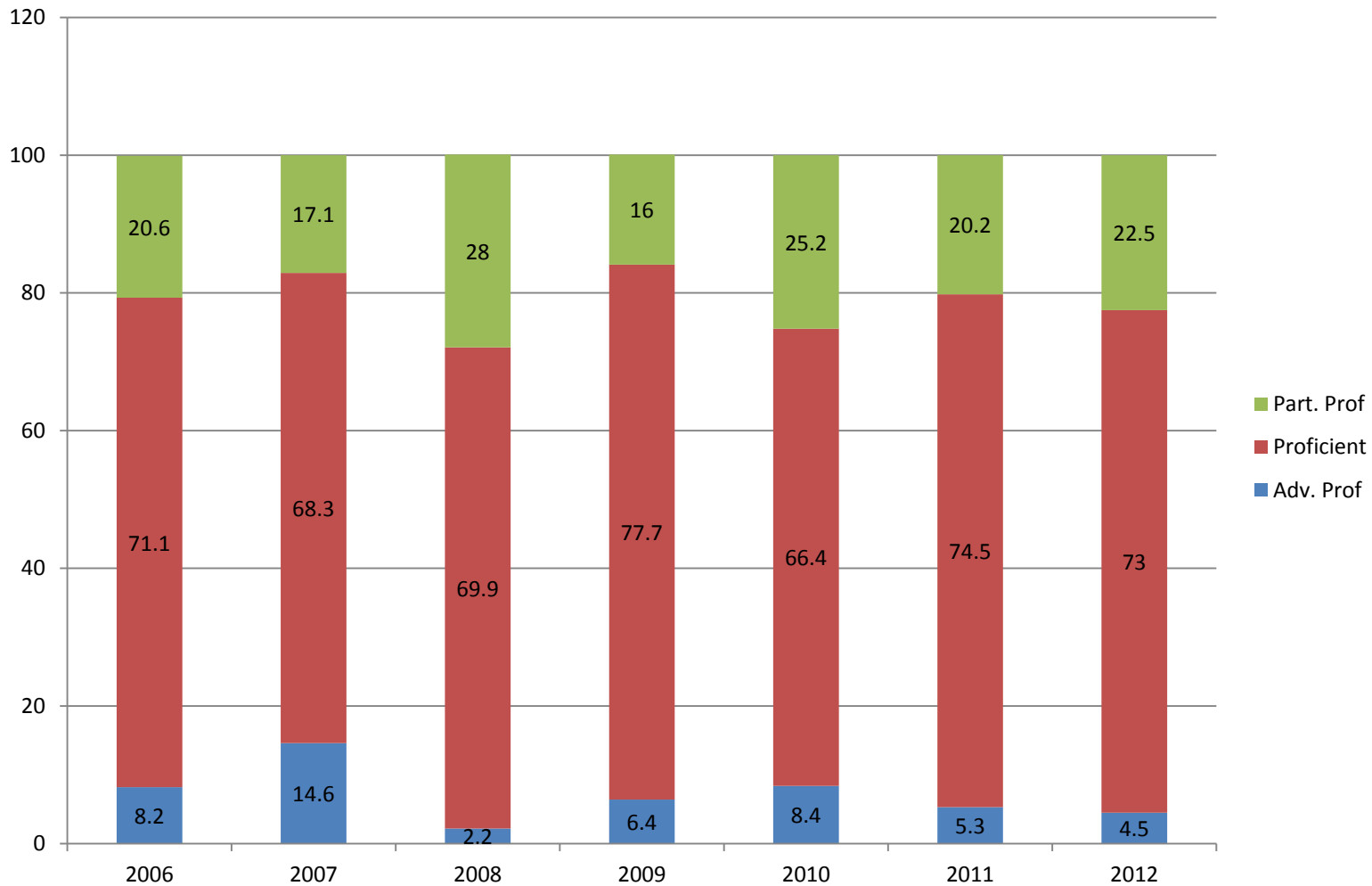
## MATHEMATICS

Spring 2012 – Mathematics



# GRADE LEVEL SCORES – GRADE 6

## LANGUAGE ARTS LITERACY



# GRADE LEVEL SCORES – GRADE 6

## MATH LITERACY

